

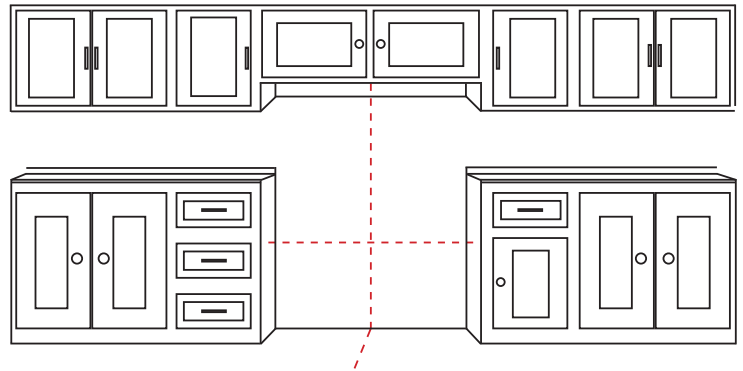
MEASURE YOUR SPACE

Refrigerator Measurement Guide



- 1 Measure the height** from the floor to the bottom of your cabinet. Measure on both sides of the opening to ensure there are no differences from one side to the other.
- 2 Measure the width** at the bottom of the opening, the middle, and the top to ensure that there are no differences from top to bottom.
 - **NOTE:** If your refrigerator sits against a wall or within an enclosure, additional clearance may be required to allow the door(s) to fully open. Door reversal service is available for an additional charge, if needed. See a sales associate for more details.
- 3 Measure the depth** from the back of the opening to the front of the counter. Measure the top of the opening, middle, and bottom to ensure there are no differences from top to bottom.

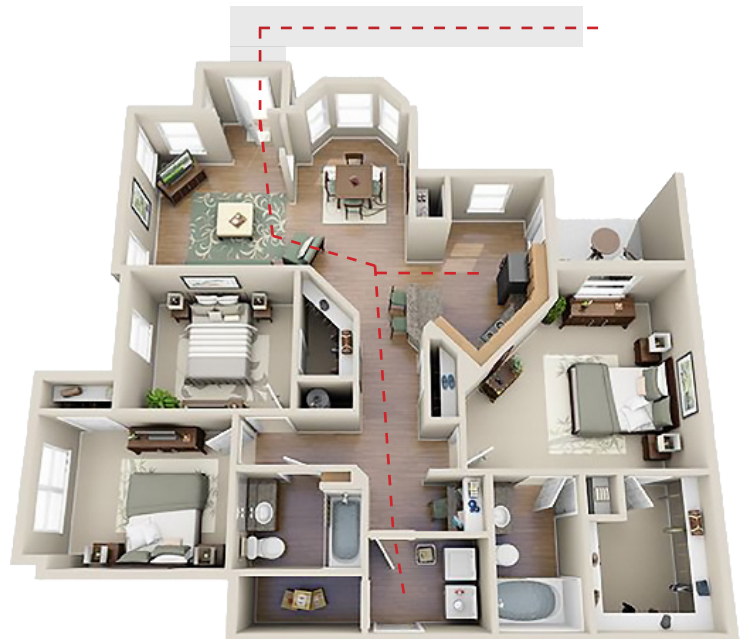
Laundry Measurement Guide



- 1 Measure the height** allowance if there are cabinets/shelves above where your washer and dryer will go, especially if you plan on using pedestals for a front load pair.
- 2 Measure the width** allowance available in your laundry space. If there are cabinets on either side of where they will be placed, make sure to account for any molding along the cabinet sides or against the wall.
- 3 Measure the depth** allowance and allow for 5" of extra space for the washer hoses and dryer vent to be installed and operate properly.
 - **NOTE:** If you require a door reversal on either the washer (select models) or dryer (most dryers) for proper clearance, this service is available for an additional charge. See sales associate for more information.

WALK THE PATH

- 1 START** where the refrigerator will be unloaded from the delivery truck and make sure the path to where it will be placed is clear and unobstructed. Remove any obstacles that may prevent the delivery crew from getting it to the right spot.
- 2** All doorways, hallways, and pathways must be at least 30" wide. You may need to remove some doors from their hinges in order to reach that minimum clearance. Make sure to account for knobs, latches, hinges, shelves, and other wall-mounted fixtures within the pathway. For corners and stairways, you will need at least 38-44" to clear a 90 degree turn.
- 3** Carefully measure the space in which the refrigerator will be installed. Make sure to account for moldings, doorways, cabinets (if you have them), and enough space for the refrigerators doors and/or drawers to fully open.



If ANY part of your delivery path or kitchen/Laundry room location is too small to fit your new appliances, or if obstructions cannot be moved, contact your sales professional about alternative options. We want to ensure that the delivery of your new appliances is as smooth and seamless as possible. **MEASURE FIRST!**



Refrigerator and Laundry Measurement & Delivery Form

Delivery Notice

In order to ensure that the delivery of your new refrigerator is a smooth and seamless process, we strongly encourage you to make certain that it will fit in your existing refrigerator opening.

We understand that some refrigerators will require our delivery team to remove the doors of the refrigerator in order to get it into your home. However, It is important that you map out the best route to get your new refrigerator to the desired spot in your home prior to delivery. We will remove the doors of the refrigerator if it is required to get it into your home. If there are any concerns prior to delivery, please notify your sales professional and let us know in order to avoid any additional delivery charges.

In the event that your new refrigerator or laundry does not fit your existing space during delivery, you understand that you will be assessed an additional delivery charge to have a new refrigerator delivered to your home. Please verify your dimensions prior to your initial delivery to avoid this additional charge.

My Appliance's Dimensions

Refrigerator Measurements

Model Purchased

Is this model standard or counter-depth?

☐ STANDARD

☐ COUNTER

Height

If Standard-Depth; Top of **Case**

If Counter-Depth; Top of **Hinge**

Width

Depth

Depth **With** Doors

Depth **Without** Doors*

*we are able to remove doors to in order to fit your refrigerator through doorways, hallways, etc.

Is there a kitchen island or walkways that will effect door extension?

☐ YES

☐ NO

Laundry Measurements

Model(s) Purchased

W |

D |

Height

Height

Width

Width

Depth

Depth

→ Total Width (if pair) ←

Are you getting pedestals?

☐ YES

☐ NO

Do you have any height restrictions?

☐ YES

☐ NO

Do you need Door Reversal Service? (Additional Charge)

☐ YES

☐ NO

Will these dimensions work with all walkways leading to your space?

☐ YES

☐ NO

Are there any other obstructions that will or could prevent successful delivery and installation?

☐ YES

☐ NO

Date: _____

Customer Signature: _____