



E4 Control Systems | Home options for the home lifestyle
Toll Brothers

Standard Wiring (Plan Specific)

Qty	Description
1	Cat-6 Phone Outlet at Master Bedroom, & Kitchen
1	Coax TV Outlet at Master Bedroom, Secondary Bedrooms and Activity Rooms
1	Cat-6 Data & Coax TV Outlet at Great Room
1	28" Structured Wiring Cabinet with 110 Power, Coax Splitter & Phone Block



(1) Cat-6 Data or Phone
(1) RG-6 Coax TV



(1) Cat-6 Data
(1) Cat-6 Phone
(1) RG-5e Coax TV



(1) Cat-6
Phone



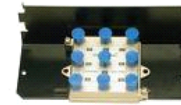
(1) RG-6
Coax TV



Structured Wiring Cabinet (SWC);
Master Bed Closet



Phone Block



Coax Splitter
for Cable TV

Standard Wiring

Optional Phone/TV/Data



Cable TV Outlet (Single Port) in
single Wall Plate – 454



Phone/Data Outlet (Single Port) in
single Wall Plate – 455

Where are you going to place your
wireless/hardwired router and modem?

We here at e4 suggest you place your router and
modem in the structured wiring box. It's 28" high
X 14" wide. It includes an electrical outlet inside.

Flat Screen Pre-wire #078006

Qty	Description
1	Scoop plate at future TV Location.
1	Scoop plate next to TV location
1	2" conduit with pull string
*Includes separate electrical outlet at TV height	
*Vertical Installation Only (same bay)	



hulu

NETFLIX

You Tube

Smart TV

TV's and computers are merging into one. Make sure
you take advantage of all the latest technology on the
market.

Whole House Wifi Package w/ 2 Years of Remote Network Monitoring- 78158

Qty	Description
3	Wireless Access Points, Ceiling Mounted
3	Cat6 prewires to ceiling for ceiling-mount locations
1	Eight-Port POE Switch (power over ethernet)
1	Gigabit VPN Router
1	IP Power Conditioner
2	Two years of supervised networking monitoring*

Complete installation and training included (Equipment installed after internet service installation).

*Does not include networking set up of printers, PC's, laptops or other networked devices.

*Buyer must provide internet service



OUTDOOR WIRELESS ACCESS POINT (WAP) - 78160

Qty	Description
1	Wireless Access Point, Wall Mounted
1	Cat6 prewire to Outside location.

Must Include - WHOLE HOUSE WIFI PKG W/2 YEARS REMOTE NETWORK MONITORING (078158)

*Does not include networking set up of printers, PC's, laptops or other networked devices.

*Buyer must provide internet service



WIFI PREWIRE PACKAGE- 78159

Future proofing your home with a prewire for WIFI Access Points will allow you to install Wireless Access Points after you move in to evenly distribute internet signal strength throughout your home.

Includes: (1) Cat6 prewire to ceiling-mount location

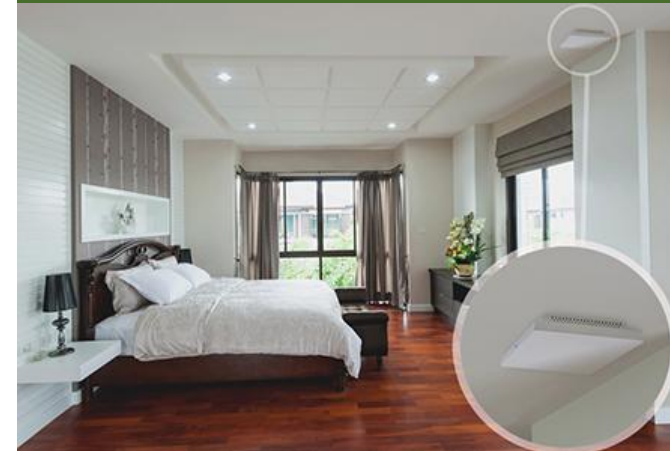
Option can be purchased in multiple quantities and the number of WIFI Access Points may vary based on the size of your home.

Does not include networking set up of printers, PC's, laptops or other networked devices.

Buyer must provide internet service.

Networking Packages

Indoor Wireless Access Point Installed



Today, WAPs are built with a focus on aesthetics, making this a product that you will be proud to put in your home. Equipped with just one LED on the side, these WAPs provide an option that's both good looking and discreet.

Outdoor Wireless Access Point Installed



Get reliable signal and fast internet speeds anywhere outdoors. Equipped with the latest AC wireless technology, this WAP offers faster network speeds than ever before. It operates via concurrent radio interfaces, which enables automatic dual-band steering between 2.4 and 5 GHz bands for optimal performance. And since this WAP is IP55 rated, it can be placed outdoors without being compromised by rain, wind, or dust.

Security Options

To sleep soundly, you need peace of mind. You need to know that what you value most—your home and your family—are safe and secure. According to statistics, homes without alarm systems are three times as likely to be broken into than those that do. And, a hardwired alarm system is twice as reliable as a wireless security system. Trouble is, wireless motions sensors, window, and door contacts have batteries that need to be frequently replaced. The facts are in—hardwired security systems are effective in preventing loss of life and protecting property. Like millions of others, you've realized that your peace of mind is what matters the most, and are considering purchasing a home security system. Smart move!



Security System "B" - 427

- | Qty | Description |
|-----|--|
| 1 | DSC 8 Zone Panel with 6 hour battery backup |
| 2 | DSC LCD Keypads at Garage to House Door & Master Bedroom |
| 2 | *DSC Pet Motion Sensor at Great Room & Foyer |
| | **Security Switches at All Doors |
| 1 | DSC Siren Located Over the Garage to House Door |
| | Requires 2 year monitoring agreement \$35.99 a month |
| | **Includes GSM Cellular Module |



Contacts on all doors



Security System "C" - 428

- | Qty | Description |
|-----|---|
| 1 | Must Have Security Package "B" |
| | Security Switches at All 1st & 2nd Level Operable Windows |
| | Requires 2 year monitoring agreement \$35.99 a month |
| | **Includes up to three zone expanders |



Adds contacts to 1st & 2nd Floor Windows

Security System "D" - 429

- | Qty | Description |
|-----|--|
| 1 | Must Have Security Package "B" |
| 2 | Smoke Detectors Dedicated to Security System Fire Monitoring |



Traditional Security Options



Additional Keypad –
078005



4 Button Keyfob –
436

Motion Sensor –
078034



Wireless Rate of Rise Fixed
Heat Detector - 078013



Wireless Glassbreak –
078011



Carbon Monoxide –
078012



Security Options

Westminster Monitoring Services

What is monitoring?

It's the ongoing monitoring of your security system by a central station. Security systems send their signals over your telephone line (or cell phone module) to a central monitoring station-the facility that acts as the link between your home and the police, fire department, and emergency response authorities. A central station is manned 24 hours a day, 7 days a week by highly skilled operators trained to respond to emergencies. The station operator alerts the proper authorities and dispatches help.

We strongly suggest this extra insurance for your most valuable asset, your family and home. Some insurance companies allow you to off-set the cost of your monitoring with home owner insurance discounts, it's worth a look.



*DSC Pet Motion Sensor is good up to an 85lb animal.
**Garage roll-up door not included with either home security system.



Alarm.com Indoor Wireless Fixed IP Camera- 078014

Indoor cameras must be wired for power, so prewire is required. Recording is stored on SD card in cameras. Cameras do not work without Alarm.com



Lighting Package Alarm.com- 078044

Includes 2 light switches, if controlling one light with two switches, it will require 2 Alarm.com light switches.

Alarm.com Z-Wave Smart Thermostat- 078043

Control your thermostat via Alarm.com



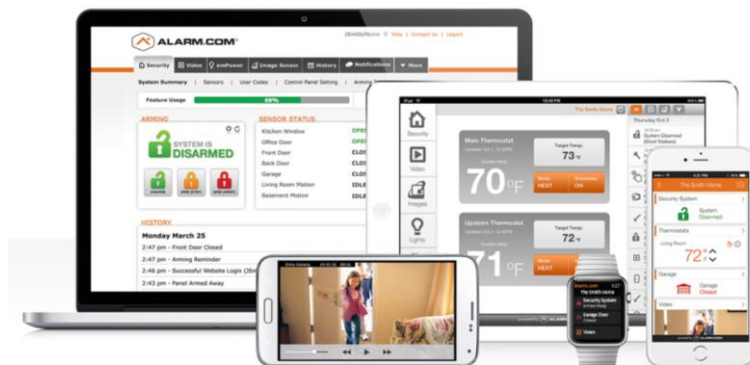
Westminster Monitoring Rates

\$35.99 Basic Monitoring

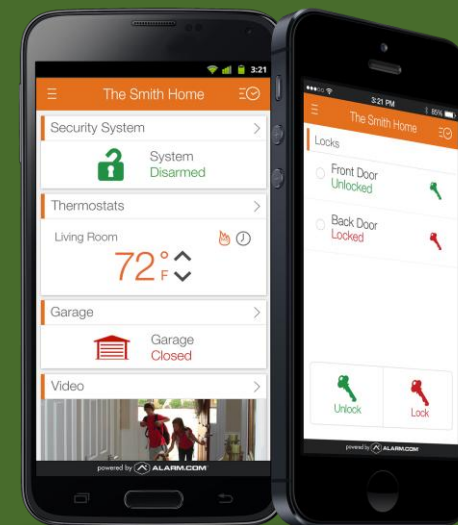
\$37.99 Interactive Monitoring

\$39.99 Advanced Interactive Monitoring

\$45.99 Interactive Gold Monitoring



Security Options



Alarm.com is the leader in Smart Home Security, giving you solutions to monitor, protect and automate your home. More than a smart app or a cool thermostat, Alarm.com seamlessly connects the key devices in your home on one platform — so they work together, and work smarter.



Cinema Options

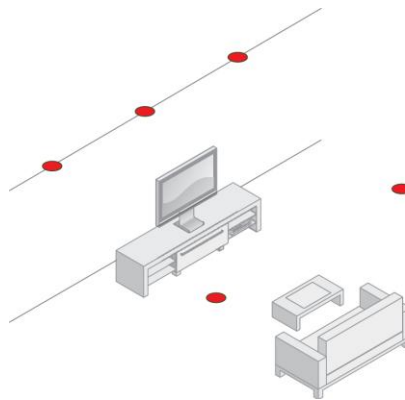
The home theater has become an indispensable part of daily life. No longer do we simply watch TV. We want a theatrical experience with bigger picture, brighter colors, and incredible sound. In fact, the amount invested in sound productions on the silliest of sitcoms is a dramatic indication of how important sound quality has become to the viewer. Even more attention is being paid to the sound of prime-time dramas and sporting events, not to mention the million spent creating the sonic presentation in feature films. Technologies like 3D, Smart TV, Netflix are incredible, take advantage of it now!



Home Theater Speaker System – 492

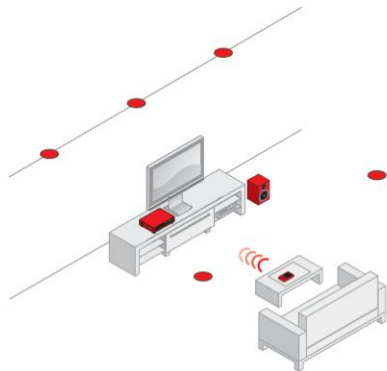
Qty	Description
5	Origin Acoustics D84 3-Way In-Ceiling Front Speakers
5	*New Construction Speaker Rings
1	One surround sound pre-wire home run next to TV
*Lifetime Warranty on all Origin Acoustics In-Ceiling Speakers	

*Note: The surround sound speakers do not include equipment and are to be used in conjunction with the Homeowner's provided amplifier



Home Theater Speaker System Upgrade #1 – 078051

Qty	Description
5	Origin Acoustics D84 3-Way In-Ceiling Front Speakers
5	*New Construction Speaker Rings
1	One surround sound pre-wire home run next to TV
1	Integra Dolby Digital Surround Sound Receiver
1	Built in Zone 2 Amplifier for up to 3 pairs of music speakers
1	LCD Universal Programmed Remote with RF Adapter
1	Sunfire 10" 250 Power Subwoofer
*Lifetime Warranty on all Origin Acoustics In-Ceiling Speakers	



Home Theater Speaker System Upgrade #2 – 078052

Includes Home Theater Speaker System Upgrade #1 with upgraded Origin Acoustics D86 In-Ceiling Directional Speakers

Home Theater Speaker System Upgrade #3 – 078135

Qty	Description
5	Origin Acoustics D104 3-Way In-Ceiling Front Speakers
1	Upgraded Integra Audio/Video Receiver 4K THX with zone 2 amplifier
1	URC RF Universal Remote with RF Base Station
1	Upgraded Sunfire 12" 300 watt Power Subwoofer
*Lifetime Warranty on all Origin Acoustics In-Ceiling Speakers	

Origin Acoustics D84

Directional Speakers:
8" woofer for bass
4" Mid-Range
3/4" Tweeter



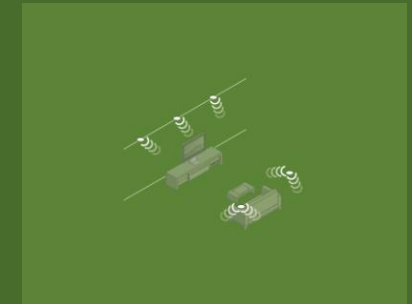
5.1 Surround Sound Plate



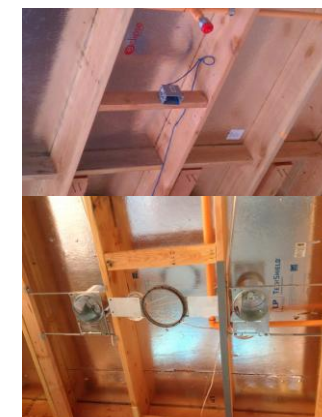
Section Options

Aimable Speakers

Speakers hidden away in ceiling are a huge step toward a more attractive living space. However, sound travels in very predictable patterns. Directing sound to an exact position in a room requires that these patterns converge properly. The introduction of a speaker that actually pivots to the correct position, while remaining flush in the ceiling is one of Home Theater's greatest technological achievements. Our e4 technician will perfectly align every speaker to be placed and aimed to create the perfect sound field.



**Integra home theater requires 18" cabinet depth an 18" cabinet width for the receiver to fit.
**The 10" subwoofer dimensions: 14" X 17" X 14", will need to be placed at the front or rear of the room.
**The 12" Subwoofer dimensions: 15" X 17" X 16"
**Ventilation might be required if there is no airflow in the cabinet
**Please have your cabinet person drill 4" Holes for



Speaker Pre-wire Installation

Home Theater Speaker Installation includes new construction bracket to center speakers with lights and avoid obstructions like sprinkler lines.

5.1 Home Theater Speaker Pre-wire – 489

- (3) In-Ceiling Pre-wire for three front channel speakers
- (2) In-Ceiling Pre-wire for two rear channel speakers
- (1) Pre-wire for line level subwoofer to rear of room
- (1) 5.1 Surround Sound Plate next to TV

Home Theater Speaker System Upgrade #4 – 078161

Qty	Description
3	Tribe III Design On Wall HiFi Speakers (Front Left, Right, & Center Speakers)
2	Tribe In-Ceiling 6" Speakers
2	Tribe In-Wall Double 8 with additional Subwoofer Module
1	Parasound 5 Channel Amplifier THX Ultra2 Certified
1	Integra Preamp Processor
1	URC RF Universal Remote with RF Base Station
2	6" new construction speaker rings
All cables for installation - HDMI, Optical, etc	
Homeowner Training is also included	
* TRIBE III Speakers come in 3 colors (ICE Gloss White, Gloss Red, & Gloss Black)	
**TRIBE III Speakers (Width 5.9" X Depth 3.75" X 36" High)	



Tribe Double 8 with Subwoofer Module



Tribe III On-Wall Speakers



Tribe 6" In-Ceiling Speakers



Parasound 5 Channel THX Amplifier

Section Options

This upgrade is for the true audiophile in need of a high-end theater system for a dedicated theater room or great room.

The Tribe III is a true full-range speaker that activates sound naturally and effortlessly with complete phase coherence and unequalled dispersion. It is truly one of the world's best speakers. Nuance, inflection, detail, power and flexibility are just some of its qualities.

The Tribe Double 8 In-Wall Sub incorporates 2 active drivers with stiff ballistic carbon fiber cones. The double drivers have been designed to function without passive radiators permitting a much smaller footprint and grill opening.

Integra Preamp Processor

Get ready for the next generation of object-based, multi-dimensional sound from DTS. No longer limited by specific channels- DTS:X allows audio content to move with fluidity, accuracy and immersiveness as never before.



**Parasound home theater requires 23" cabinet depth an 20" cabinet width for the amplifier to fit.

**Integra home theater requires 23" cabinet depth an 20" cabinet width for the receiver to fit.

**Ventilation might be required if there is no airflow in the cabinet



10" In-Wall Subwoofer with 500 Watt Amplifier Upgrade- 078137

Qty	Description
1	4' Aluminum New Construction Enclosure for the 10" Composer Subwoofer
1	Composer 10" Aluminum In-Wall Subwoofer and Baffle for New Construction
1	500" Watt Subwoofer Amplifier

*Subwoofer amplifier will be wired and installed at the home theater equipment location.

**This price includes the credit for the subwoofer in the Home Theater Upgrade #1, #2, #3.

Floor Standing Media Rack- 078138

Qty	Description
1	21U Equipment Rack with Smoked Glass and Side/Rear Panels
2	Ventilation Fans with Advanced System Temperature Control
1	IP Controllable 3 Outlet Compact Power Conditioner with Auto Reboot
1	18" Rear Power Strip

Includes: (3) 2U Shelves (2) 1U Half Depth Rack & (2) 1U Shelves

*Additional Cooling may be required if the rack is placed in a confined space such as a closet.

**The space must fit the rack with dimensions of (45" H X 22" W X 23.25" D)

**Must Purchase Home Theater Upgrade #1, 2 or 3

Origin Acoustic 10" Subwoofer

Empowering home theaters and audio systems with the lowest of lows, the new Composer 10" In-Wall Subwoofer for New Construction has been designed with a pure aluminum woofer and faceplate to effortlessly handle up to 250 Watts of power and dissipate obstructive temperatures. Dense rubber lining around the cone ensures a deep performance that excites over a lifetime without the disruption of vibrations.



Floor Standing Media Rack

Place all of your audio/video equipment in an equipment rack for a clean, well organized setup!

This rack keeps A/V equipment cool and reliable with active cooling that features vents in the bottom and efficient, high flow fans in the top.



Music Options

Once you have lived with a whole-house music system, you will never be able to live without one. Addictive may be too strong a word but habit forming certainly describes the condition. Whatever the occasion, music can enhance and enliven the experience. Now imagine that music available in any room at any time. One button can deliver the music for the moment, be it in one room or throughout your entire home. Parties, family gatherings, even time alone will never be the same. E4 can make it happen. Experience what you've been missing.



Room Of Stereo Music - 491

Qty	Description
1	Pair of Origin Acoustics D61 recessed 6.5" In-Ceiling Speakers. *Life-Time Warranty on all Origin Acoustics In-Ceiling Speakers
1	Pair of New Construction Brackets Speaker Rings & Music Pre-wire
1	Impedance Matching Volume Control

*Note: The music speakers do not include equipment and are to be used in conjunction with the Homeowner's provided amplifier



Room of Stereo with Upgraded 8" Speakers - 078164

Qty	Description
1	Pair of Origin Acoustics D85 recessed 8" In-Ceiling 3-Way Speakers. *Life-Time Warranty on all Origin Acoustics In-Ceiling Speakers
1	Pair of New Construction Brackets Speaker Rings & Music Pre-wire
1	Impedance Matching Volume Control

*Note: The music speakers do not include equipment and are to be used in conjunction with the Homeowner's provided amplifier



Origin Acoustic "Valet" Voice Activated Audio System with speakers- 078163

Qty	Description
4	Pairs of 6" New Construction Speaker Rings
4	Pairs of Upgraded 6" In-Ceiling 3-Way Speakers
4	One Room music pre-wire, home run to media niche
4	POE power supplies for VA Pods
4	In-ceiling VA Pod mounts for best coverage of each room
4	Voice Activated (VA) Pods to cover four rooms



Music Options

Choose your level of control

It's important to consider "control" when designing a music system for your dream home. Control ranges from a basic volume control to an easy-to-use keypad that will give you the flexibility to access your iPod and change the music off your cable box located in another room. When making your selection, consider our amplified solutions to be sure you're getting maximum performance and sound out of your speakers.

About Speaker Types

We understand that speakers don't come in a "one size fits all." So we give you three options. Outdoor Patio Speakers for the rear of the house, Dual Tweeter Speakers for the small areas, & Stereo Speakers for main living areas.

Additional Options:

One Room Music Speaker Pre-wire – 488

Includes: (2) Speaker Pre-wires & (1) Volume Control Pre-wire

Three Room App Music System - 078053



Qty	Description
1	Nuvo 3-zone Receiver (Nuvo App - Pandora - Rhapsody – Tunein)
2	Pairs of Origin Acoustics D60 recessed 6.5" In-Ceiling Speakers
1	Pair of Origin Acoustics Seasons OS54 Exterior Stereo Speakers.
2	Pairs of 6" New Construction Speaker Rings
1	Music pre-wire home run next to TV at Family Room



Four zones can be achieved via a Line Level to a receiver

Installation Notes: Includes complete installation of music system, all audio/video wires, and home buyer training.

Three Room App Music System Upgrade- 078134



Qty	Description
1	Nuvo Upgraded 3-zone Receiver 200 watts per zone (Nuvo App - Pandora - Rhapsody – Tunein)
3	Pair of Origin Acoustics D84 recessed 8" In-Ceiling Speakers. *Life-Time Warranty on all Origin Acoustics In-Ceiling Speakers.
3	Pair of 8" New Construction Brackets Speaker Rings
3	Music pre-wire home run next to TV at Family Room



Installation Notes: Includes complete installation of music system, all audio/video wires, and home buyer training.

Three Room App Music System Touch Screen - 078162

Qty	Description
1	LCD Touch Screen to the Three Room Music System
1	Cat6 pre-wire from keypad to equipment
1	POE for keypad

*Note: Must be purchased in conjunction with either of the three room music systems

Music Options

App Music System – Three Room Music

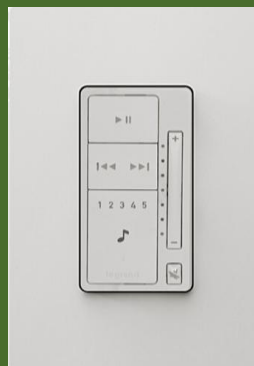
The P3100 Professional Series Player expands the NuVo Player Portfolio by delivering musician-grade audio and 40 watts of power per zone, to three separate zones simultaneously. Wirelessly manage your music from the palm of your hand with free apps for your Apple or Android device. World-renown Audyssey™ music technology optimizes your listening experience with Dynamic Volume.

Three Room App Music System Upgrade

The P3500 Professional Series Player picks up where the P3100 leaves off. Providing 200 watts of power per zone, this player brings music to any three rooms of your home. Your music selection is limitless thanks to built-in access to Internet radio as well as a network connection to your personal music collection. Pairing the P3500 with upgraded Origin D84 recessed speakers is sure to provide a rich listening experience.

App Music System Keypad Upgrade- 078136

With its sleek backlit design, available color options (white, light almond, and nickel), and single-gang architecture, the P10 pairs simplicity with style. The P10 works in harmony with the Nuvo Player app to keep both control methods in perfect sync, and is powered by a single RJ45 POE





Control4 Entertainment Bundle- #078121

Qty Description

- 1 Control4 EA1 Controller
- 1 Control4 Remote with charging station
- 1 5 Port Networking Switch
- 2 Prewire Cat6 to niche
- 12 Max Programmed Scenes

*Includes 1 year 4sight subscription

*Supports up to 10 Zigbee devices

*Buyer to provide adequate wireless internet signal, installation included.



Control4 Front Door Camera Intercom - #078125

Qty Description

- 1 Front Door Intercom Unit with Camera, Speaker, and Doorbell
- 1 Cat6 Prewire with New Construction Bracket at the Intercom Location.
- 1 7" In-Wall Touchscreen

*Must have Control4 Entertainment Bundle (#078121)



Control4 Thermostat in Lieu of Standard - #078127

Qty Description

- 1 Control4 Smart Thermostat

*Must have Control4 Entertainment Bundle (#078121), It's Recommended to Purchase One Per Zone.



Control4 7" In-Wall Touchscreen - #078124

Qty Description

- 1 7" In-Wall Touchscreen with Camera
- 1 Cat6 Prewire with New Construction Bracket at the Intercom Location.

*Must have Control4 Option (#078121)



Control4 Options

Personal Device Control

In a Control4-enabled smart home, MyHome apps work with your system over the WiFi network in your home. All this happens securely because only authorized devices can connect to your system. With either a single device or multiple-device license (site), it's easy to control your home from an iPhone, iPod Touch, iPad, Android smartphone, tablet, PC or Mac while inside the home.



7" Touch Screen

The Control4® In-Wall Touch Screen with Camera delivers always-on, dedicated system control in an elegant, low profile tablet-style form factor that can be easily mounted on the wall. The 7" In-Wall Touch Screen with Camera features full-motion video intercom and the fidelity of wideband audio intercom for crystal-clear communications and control throughout a home.

Control4 Music Services

Rhapsody

For \$9 a month you can access to their entire music library and create your own personalized music library. You can also create customized music channels just like Pandora

Tunein

Listen to your local FM stations from the free music service Tunein.

C4 Wireless Adaptive Phase Dimmer #078131



C4 Wireless Keypad Dimmer #078132



C4 Wireless Light Switch #078129



C4 Wireless Configurable Keypad #078133



Control4 7" Tabletop Touch Screen - #078124

Qty	Description
1	T3 7" Portable Tabletop Touch Screen with Camera
1	Cat6 Prewire with New Construction Bracket at the Touch Screen Location

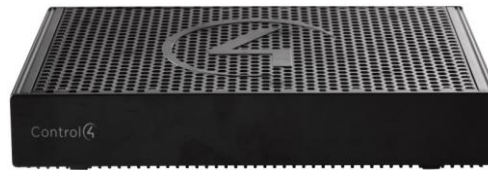
*Must have Control4 Option (#078121)



Control4 EA3 Upgraded Controller- #078122

Qty	Description
1	Control4 EA3 Controller In addition to connecting and automating all of your entertainment gear, lighting, and security devices, the EA3 Controller provides the ability to stream high resolution, multi-room audio from up to three separate sources simultaneously to in-wall, ceiling, or wireless speakers

*Must have Control4 option (#078121)



Control4 EA5 Upgraded Controller - #078123

Qty	Description
1	Control4 EA5 Controller This controller is designed to automate virtually everything in your home including home theaters, complex interior and exterior lighting scenes along with climate control for multiple zones.

*Must have Control4 option (#078121)



Two Room Voice Activated Package- #078165

Qty	Description
2	Voice Activated (VA) Pods to cover two rooms
5	Additional Programmed Scenes
2	In-ceiling VA Pod mount for best coverage of room
2	POE power supplies for VA Pods

*This package can only be purchased in conjunction with Control4 Packages

**requires a 4sight license, annual \$99 and 1st year is included.



Control4 Options

T3 7" Tabletop Touch Screen

T3 Series Tabletop Touch Screens are sleek, portable devices that can be taken from room to room to provide dedicated control over the technology in your home or business. Featuring gorgeous new tablet design and stunning high-resolution graphics, they look beautiful anywhere in your home.



Control4 Controllers

The controller is the brain of your smart home. It manages your home automation system, allowing the electronic devices in your home to work together- from lighting and security, to music and video, and pretty much anything else in between. No matter the size of your home, whether you're automating a single room or a sprawling mansion, Control4 controllers are capable of powering your entire home automation system.

**Pool Control, Shade Control, and Voice control integration would be considered an additional installation item billed hourly.

We recommend Qmotion, Somfy, and Lutron for automated shades... Pentair IntelliToch or Jandy for Pool Control, be sure your pool or shade contractor adds the RS232 adapter or have him contact e4 for system requirements.

Control4 Audio Upgrade - #078128

Qty	Description
1	Control4 8 Channel 4 Zone Speaker Amplifier

*Must purchase (4) Room of Stereo Packages #491

*Must Upgrade to EA3 or EA5 Controller

*Must have Control4 option (#078121)

** Control4 amplifier requires 20" cabinet depth an 18" cabinet width for the amplifier to fit.

**Ventilation might be required if there is no airflow in the cabinet

**Please have your cabinet person drill 4" Holes for interconnect wires



PANDORA®

tunein

TIDAL

napster®

Control4 Five (5) Light Switches - #078130

Qty	Description
3	Adaptive Phase Dimmers
2	Slave Light Switches for 3-way switches



Control4 Garage Door Kit - #078126

Qty	Description
1	Garage door kit (up to 2 garage doors) with wireless 5 button remote

IP Exterior Camera - #078096

Qty	Description
1	Vandal Proof Exterior Camera with 32MB SD Card for Storage
1	Cat6 wire to Structured Wiring Cabinet and POE Power Supply



Control4 Options

One-touch music.... In every room

With one simple touch of a button, lights dim, curtains close, TV turns on and a movie cues; your receiver, meanwhile, tunes to the correct input and perfect volume. Control4 eliminates the need for multiple remotes, and makes it easy to bring movies and music to every corner of your house. With multi-room music, parents can enjoy jazz in the living room and the kids can still stream rock in the den.



EA1 Entertainment Bundle

The EA-1 The ideal smart home starter set— Designed for an exceptional family room entertainment experience, the EA-1 Entertainment Bundle connects and automates all of the gear around your TV, with just one remote.

Control4 10" Touch Screen- #078139

Qty	Description
1	Pre-wire Cat6 Wire from Structured Wiring Cabinet to 10" LCD Touch Screen
1	LCD Rough-in Enclosure
1	10" LCD Touch Screen
1	POE - Power over Ethernet Power Supply at Structured Wiring Cabinet



*If Control4 Intercom System is purchased, the 10" LCD will have camera & intercom functionality.

*This package can only be purchased in conjunction with Control4 Entertainment Bundle (#078121)

Control4 - Secondary Bedroom Controller with Remote- #078140

Qty	Description
1	EA-1 Controller
1	SR-260 Remote Control (RF)

*Installation includes connecting TV/Equipment to control4 system, program remote, and training.

*Must have Control4 Entertainment Bundle (#078121)

*Package includes mounting TV and we strongly recommended a flat screen pre-wire or wires will be exposed. E4 will not install the wire behind the drywall unless there is a flat screen pre-wire.

Control4 - Secondary Bedroom Controller w/ Remote Plus Receiver & Pair of In-Ceiling Speakers - #078141

Qty	Description
1	EA-1 Controller
1	SR-260 Remote Control (RF)
1	Basic HDMI Stereo Receiver (Yamaha, Pioneer, or equivalent)
2	Origin Acoustics 6.5" In-Ceiling Speakers
2	Pre-wire for In-Ceiling Speakers

*Installation includes connecting TV/Equipment to control4 system, program remote, and training.

*Must have Control4 Entertainment Bundle (#078121)

*Package includes mounting TV and we strongly recommended a flat screen pre-wire or wires will be exposed. E4 will not install the wire behind the drywall unless there is a flat screen pre-wire.

***This package will add a zone of control4 audio to your system, and allows you to play the sound from the TV over the speakers.

Control4 Options Continued

Features of the Control4 T3 10" Touch Screen

- Browse your playlists with a simple swipe, display bold cover art images, and easily personalize your lighting experience.
- Video Intercom allows you to see who is at the front door, check in on your sleeping baby, or call everyone together for dinner with high-quality audio and high-definition video.
- Delivers always-on, dedicated control over all the technology in your home or business.
- Features low-profile design, edge-to-edge glass and crisp picture with two and a half times the resolution of previous models.



Central Vacuum Option - 481

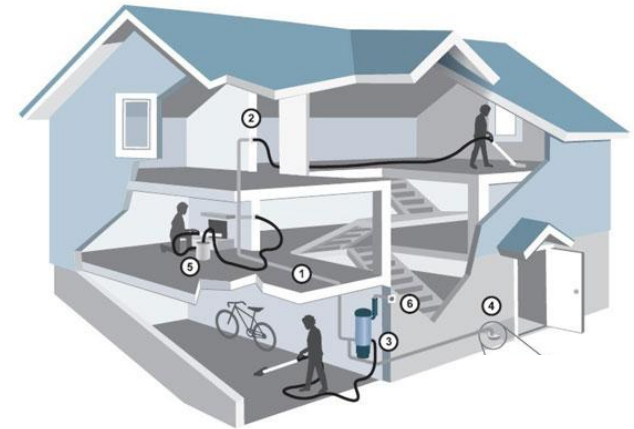
Qty	Description
1	Electrolux "Bagless" Power Unit Rated For 7000' SF House
1	One 30' Hose with Hose Sock
1	One Powered Head with for Ultimate Performance
1	16" Hard Surface Cleaner
6-8	Central Vacuum Inlets Throughout House – Powered Inlets
1	Garage Central Vacuum Inlet (Garage Closet to Kitchen If Two Garages)



Section Central Vacuum

Clinically proven Beam Central Vacuum System removes dirt and allergens from living areas.... Reducing allergy symptoms as much as 61%!

Unlike conventional vacuums that can recalculate dust, a Beam Central Vacuum System removes 100% of contracted dirt, dust mites, pollens, dander and other allergens and carries them away from living areas – to help improve indoor air quality. A Beam system make for a cleaner home and healthier living, even if you don't suffer from allergies.



Coverage

As you can see from the illustration, our inlets will cover your entire house with furniture taken into consideration.

Light & Easy To Use

The hose is very light, so cleaning a staircase is a breeze.

House Cleaners

Don't let your house cleaner use the same vacuum they just used somewhere else, that will just bring the dust and dirt from somewhere else.

Optional Inlet For Second Garage - 482

Flat Screen Prewire with Balun

- Option Number 078079

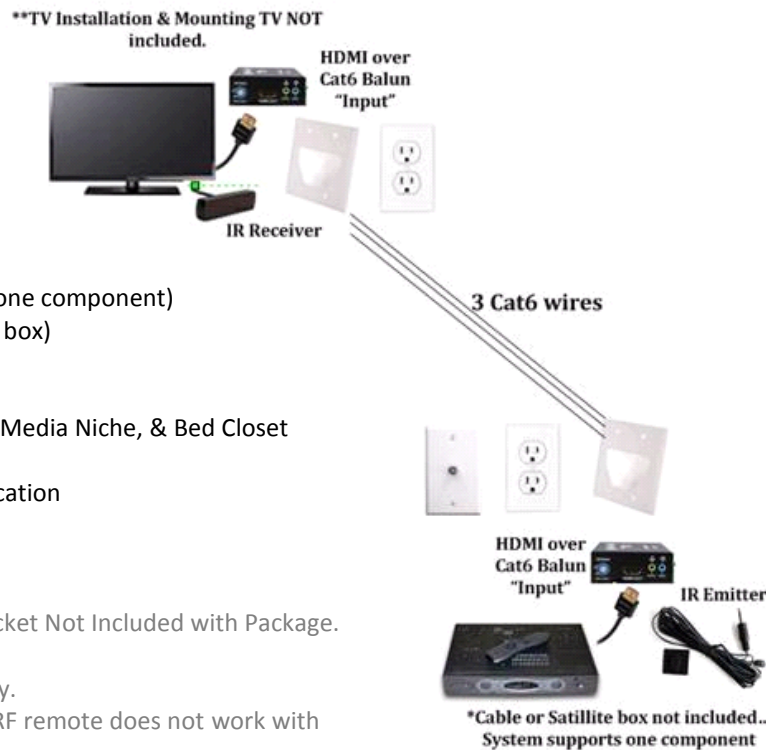
Qty	Description
1	Prewire Cat6 Wires
1	HDMI 2.0 4k HDBaseT Video Balun (good for one component)
1	IR Kit (flashes your remote signal to cable/sat box)
2	Scoop Plates at TV and Equipment Location
2	3' HDMI 1.4 Wires
*	Equipment Location Suggestions: Hall Closet, Media Niche, & Bed Closet
1	Additional RG6 Coax at Equipment Location
2	110 Electrical Outlets at TV and Equipment Location

Installation Notes:

TV Installation, TV, Cabinet to Store Equipment or Bracket Not Included with Package.
Equipment Delivered After Move-in.

**IR does not function very well outside during the day.

**IR Kit only works with IR remotes, the Cox Contour RF remote does not work with the IR kit



Emerging Options

What is a Balun?

The Binary™ HDMI Extender (Balun) delivers reliable HDMI transmission up to 130' over a single Cat5e/6 cable. This engineering marvel is able to transmit full HDMI 3D at 1080p with Deep Color and up to 7.1 channels of lossless audio – all without skipping a beat. And for the ultimate control system flexibility, it carries bidirectional IR, too! This kit also includes an Episode® Surface Mount Plasma/LED-Proof IR Sensor and Single IR Flasher with LED Feedback.



Intercom System – 461

Qty	Description
4	Selective Call Intercom Stations (Buyer selected locations)
1	Selective Call Oil Rubbed Bronze Front Door Station
1	8 Zone Selective Call Intercom Module (Max 7 indoor/outdoor stations)
1	20" EN2000 Structured Wiring Panel at Master Bed Closet



Legrand Intercom

Those ugly, record album-sized intercoms from the '70's are history. This elegantly designed next generation intercom keeps your family connected using a stylish, wall-mounted package about the size of a decorator light switch. You get great features like hands-free reply from every unit, room to room calling, an easy to read LCD screen, multi-level volume controls, plus high-quality speakers and microphones for crisp, static-free sound. So whether you're listening to the baby sleeping while answering your email, or screening visitors at the front door, the Studio Intercom System will simplify your life and keep you in touch.

Options and Upgrades

(1) Additional Intercom Station - 462